



**REGIONAL SPECIALISED METEOROLOGICAL CENTRE-TROPICAL CYCLONES, NEW DELHI
SPECIAL TROPICAL WEATHER OUTLOOK**

DEMS-RSMC TROPICAL CYCLONES NEW DELHI DATED 03.08.2023

SPECIAL TROPICAL WEATHER OUTLOOK FOR NORTH INDIAN OCEAN (THE BAY OF BENGAL AND THE ARABIAN SEA) VALID FOR NEXT 160 HOURS ISSUED AT 0300 UTC OF 03.08.2023 BASED ON 0000 UTC OF 03.08.2023.

DEPRESSION OVER NORTH CHHATTISGARH & NEIGHBOURHOOD

THE DEPRESSION OVER JHARKHAND AND ADJOINING NORTH CHHATTISGARH MOVED WEST-NORTHWESTWARDS WITH A SPEED OF 12 KMPH DURING PAST 6 HOURS AND LAY CENTRED AT 0000UTC OF 03RD AUGUST, 2023 OVER NORTH CHHATTISGARH AND NEIGHBOURHOOD NEAR LATITUDE 23.4°N AND LONGITUDE 83.4°E, ABOUT 40 KM NORTH-NORTHEAST OF AMBIKAPUR (CHHATTISGARH, 42693) AND AND 190 KM EAST-SOUTHEAST OF SIDHI (EAST MADHYA PRADESH, 42577).

IT IS LIKELY TO MOVE WEST-NORTHWESTWARDS TOWARDS NORTHEAST MADHYA PRADESH AND ADJOINING SOUTHEAST UTTAR PRADESH AND WEAKEN INTO A WELL MARKED LOW PRESSURE AREA DURING NEXT 12 HOURS.

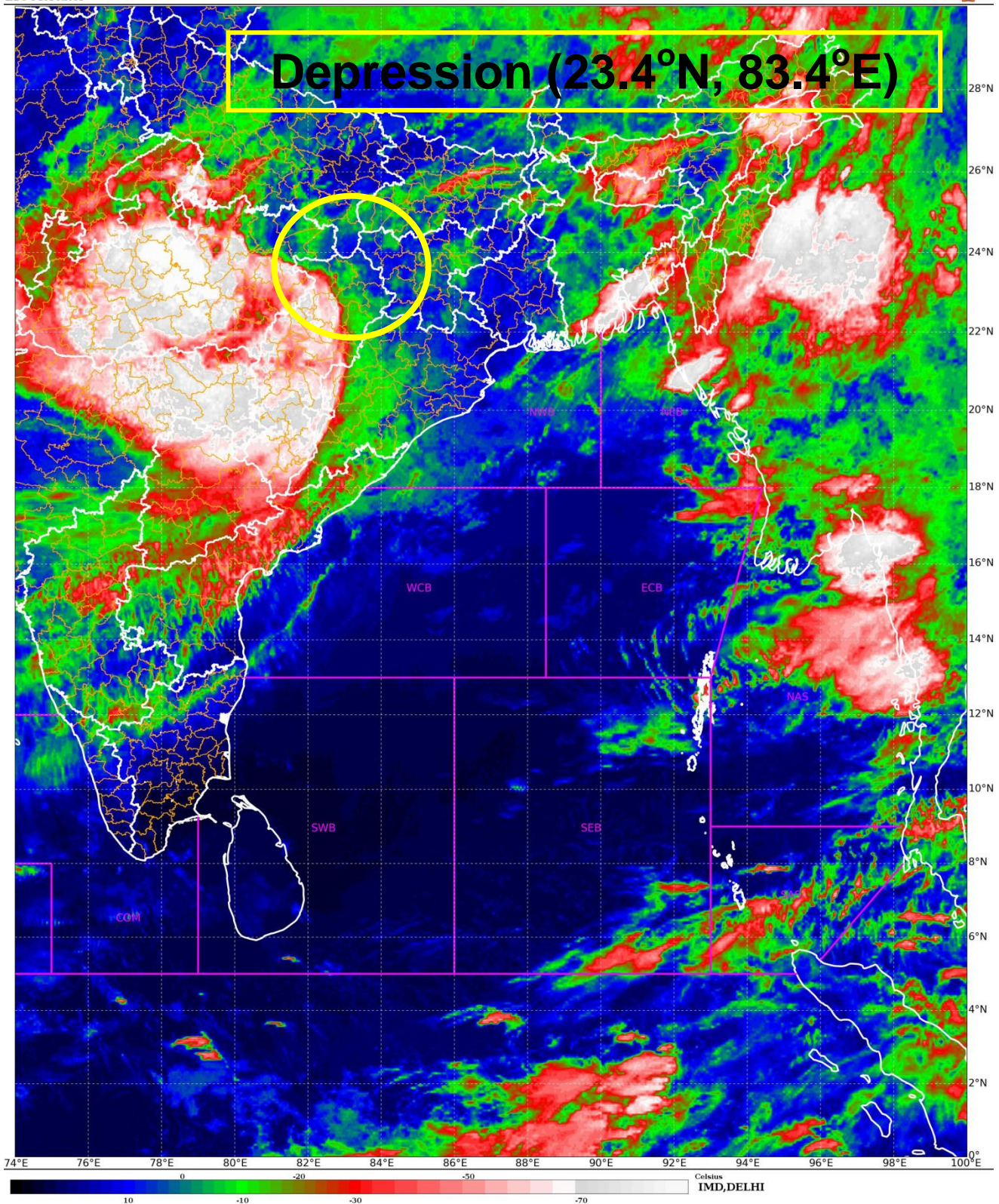
ASSOCIATED SCATTERED TO BROKEN LOW AND MEDIUM CLOUDS WITH EMBEDDED INTENSE TO VERY INTENSE CONVECTION LAY OVER NORTH CHATTISHGARH. MINIMUM CLOUD TOP TEMPERATURE IS MINUS 88 DEGREE CELSIUS.

ASSOCIATED MAXIMUM SUSTAINED WIND SPEED IS 20 KNOTS GUSTING TO 30 KNOTS. ESTIMATED CENTRAL PRESSURE IS 992 HPA.

REMARKS:

THE LOW LEVEL VORTICITY IS AROUND $150 \times 10^{-6} \text{S}^{-1}$ TO THE SOUTHEAST OF SYSTEM CENTER AND VERTICALLY IT IS EXTENDING UPTO 500 HPA LEVEL. LOW LEVEL CONVERGENCE IS ABOUT $20 \times 10^{-5} \text{S}^{-1}$ AROUND THE SYSTEM CENTRE. UPPER LEVEL DIVERGENCE IS AROUND $20 \times 10^{-5} \text{S}^{-1}$ TO THE SOUTH-SOUTHEAST OF SYSTEM CENTRE. VERTICAL WIND SHEAR IS LOW TO MODERATE (10-15 KNOTS) AROUND SYSTEM AREA. VARIOUS DETERMINISTIC MODELS ARE INDICATING THAT THE SYSTEM IS LIKELY TO MOVE WEST-NORTHWESTWARDS TOWARDS NORTHEAST MADHYA PRADESH AND ADJOINING SOUTHEAST UTTAR PRADESH AND WEAKEN INTO A WELL MARKED LOW PRESSURE AREA DURING NEXT 12 HOURS.

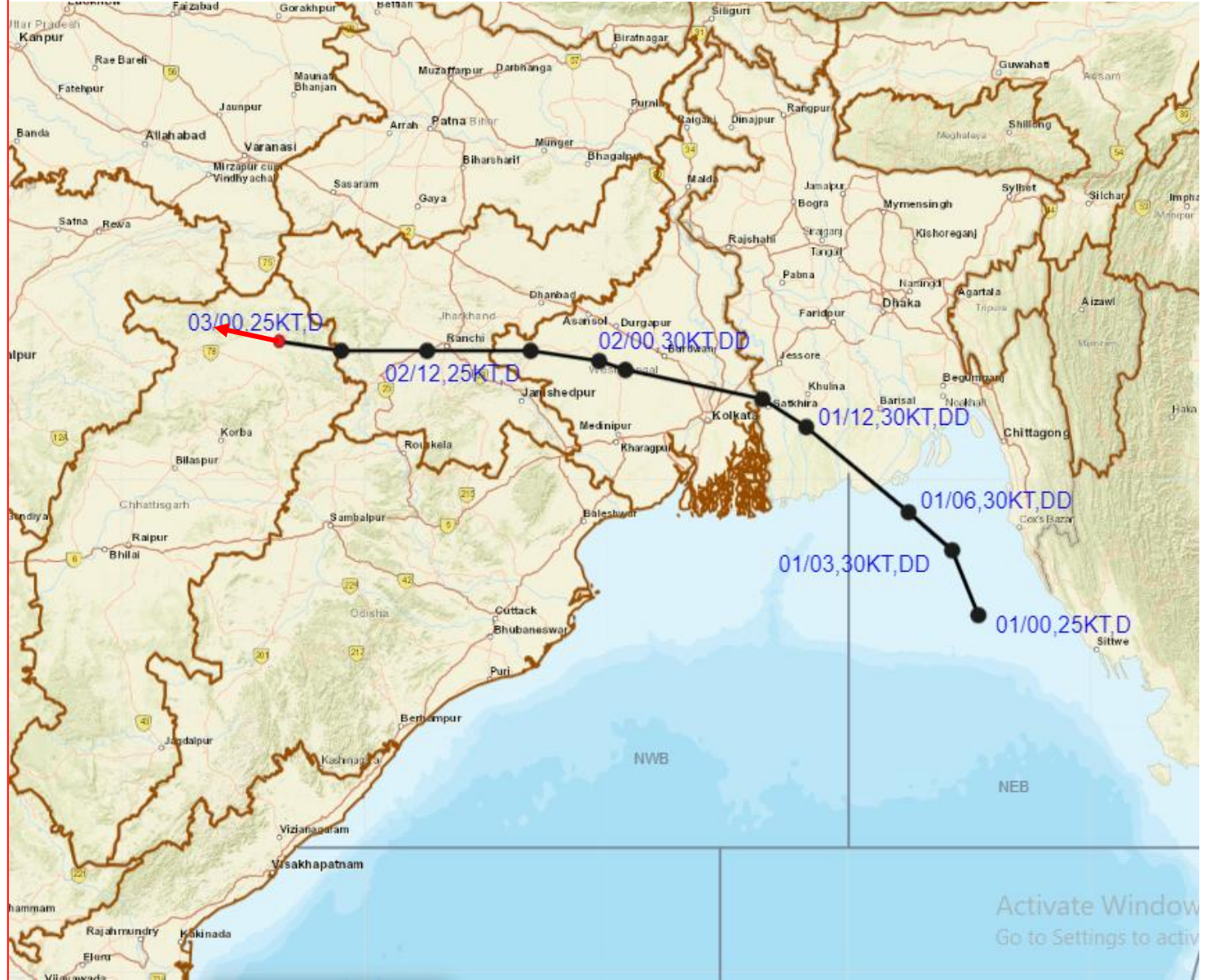
**RK JENAMANI
Scientist-G, RSMC, New Delhi**



Cloud distribution: (a) Isolated: <25%, Scattered:25-50%, Broken: 51-75%, Solid:>75%, Convection Intensity: (a) Weak: Cloud Top Temperature (CTT) >-25°C, (b) Moderate: CTT: - 25°C to -40°C, (c) Intense: CTT: - 41°C to -70°C and (d) Very Intense: : Less than -70°C
PROBABILITY OF CYCLOGENESIS (FORMATION OF DEPRESSION):NIL: 0%, LOW: 1-33%, , MODERATE: 34-66% AND HIGH: 67-100%
This is a guidance Bulletin for WMO/ESCAP Panel Member countries. Visit respective National websites for Country specific Bulletins



OBSERVED AND FORECAST TRACK OF DEPRESSION OVER NORTH CHHATTISGARH & NEIGHBOURHOOD BASED ON 0000 UTC (0530 IST) OF 03RD AUGUST 2023.



DATE/TIME IN UTC
 IST=UTC + 0530
 L: LOW PRESSURE AREA
 WML: WELL MARKED LOW PRESSURE AREA
 D: DEPRESSION (17-27 KT)
 DD: DEEP DEPRESSION (28-33 KT)
 CS: CYCLONIC STORM (34-47 KT)
 SCS: SEVERE CYCLONIC STORM (48-63KT)
 VSCS: VERY SEVERE CYCLONIC STORM (64-89 KT)
 ESCS: EXTREMELY SEVERE CYCLONIC STORM (90-119 KT)
 SuCS: SUPER CYCLONIC STORM (≥ 120 KT)

●	LESS THAN 34 KT
⊙	34-47 KT
⊙	≥ 48 KT
—	OBSERVED TRACK
—	FORECAST TRACK
▲	CONE OF UNCERTAINTY

Temperature (CTT) >-25°C, (b) Moderate: CTT: - 25°C to -40°C, (c) Intense: CTT: - 41°C to -70°C and (d) Very Intense: : Less than -70°C
 PROBABILITY OF CYCLOGENESIS (FORMATION OF DEPRESSION):NIL: 0%, LOW: 1-33%, , MODERATE: 34-66% AND HIGH: 67-100%
 This is a guidance Bulletin for WMO/ESCAP Panel Member countries. Visit respective National websites for Country specific Bulletins